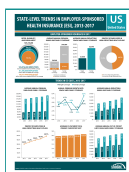




December 2018

## SHADAC Announcements

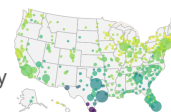
### Trends in Employer-Sponsored Insurance, 2013-2017: SHADAC Chartbook and State Profiles



A [new analysis](#) from SHADAC uses data from the Medical Expenditure Panel Survey (MEPS) to highlight the experiences of private sector workers with employer-sponsored insurance (ESI) from 2013 through 2017 at the national level and within all 50 states. While the percent of eligible U.S. employees receiving health insurance coverage through ESI held steady in 2017 at 73.5 percent, employees faced higher coverage costs in 2017, with statistically significant increases in single- and family-coverage premiums, deductibles, and out-of-pocket limits. The analysis includes a [chartbook](#), [two-page fact sheets on ESI for each state](#), and [50-state comparison tables](#).

### New SHADAC Interactive Map: Concentration of Uninsurance by Metro Areas in 2017

SHADAC's new bubble map uses data from the 2017 American Community Survey (ACS) to visualize the distribution of uninsurance by metropolitan statistical area (MSA) across the U.S., illustrating geographic concentrations of the uninsured by both count and rate. [Access the bubble map and read the accompanying SHADAC blog](#) to learn more about geographic concentrations of the uninsured along with regional patterns in uninsurance.



### Lynn Blewett Explores the New Basic Health Plan Financing Rule in *Health Affairs*



SHADAC Director Lynn Blewett and David Anderson of the Duke University Margolis Center coauthored [a post on the Health Affairs Blog](#) examining a recent Final Administrative Order from the Centers for Medicare & Medicaid Services (CMS) that would revise and recalculate CMS payments for New York and Minnesota Basic Health Programs (BHPs). Read a [summary of their analysis](#) on the SHADAC blog.

### SHADAC at the 2018 APPAM Fall Research Conference: Stabilizing the Individual Market

SHADAC Director Lynn Blewett and Senior Research Fellow Emily Zylla presented research on stabilization of the individual market at the 2018 Association for Public Policy Analysis and Management (APPAM) Fall Research Conference. Dr. Blewett [presented](#) a model predicting the number and size of eligible expenditures and the estimated reinsurance costs in four states (California, Florida, Illinois, and Texas) under multiple reinsurance scenarios. Ms. Zylla [presented](#) findings from a qualitative analysis of the experiences of three states (Alaska, Minnesota, and Oregon) that leveraged 1332 State Innovation Waivers to stabilize their insurance markets.

## Health Data, Results, & Trends from the States

### California Health Interview Survey: 8.5% of Californians Were Uninsured in 2017

According to results from the 2017 [California Health Interview Survey](#) (CHIS), 8.5% of Californians under age 65 (2.8 million) were uninsured in 2017, down almost half from a high of 15.5% (5.1 million) in 2013 and unchanged from 2016. Conducted by the [UCLA Center for Health Policy Research](#), the CHIS is the largest single-state survey in the U.S., examining approximately 21,300 households regarding a variety of health topics.

Related Resource: A [policy brief](#) using the CHIS to examine California's coverage trends by race and ethnicity was recently produced jointly by the UCLA Center for Health Policy Research and the California Health Care Foundation (CHCF).

### Colorado Health Access Survey: Coverage/Access for Black and African-American Coloradans

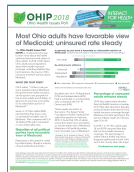


According to a [report](#) from the Colorado Health Institute, data from the [Colorado Health Access Survey](#) (CHAS) show a continuing trend of black and African-American Colorado residents gaining health insurance coverage. The uninsured rate among this group fell to 6.5% for pooled years 2015-2017 (the same as the statewide rate overall) from more than 16.0% for pooled years 2011-2013 (above the statewide rate for this time period).

### Cover Michigan Survey: Health Care Benefit Use by Demographics

The [Cover Michigan Survey](#) was conducted in the first half of 2018 by the University of Michigan's Center for Health and Research Transformation (CHRT). The survey examined health benefit utilization by gender, age, race, insurance type, annual household income, and employment status. Overall, around 96% of individuals reported using at least one benefit in the previous year, with preventive care topping the list at 81% and maternity/newborn care reported the least often at 4%. [Access key findings from the 2018 survey.](#)

### Ohio Health Issues Poll: Uninsured Rate Steady in 2018



The [Ohio Health Issues Poll](#) (OHIP), conducted by Interact for Health, examined [health insurance coverage in Ohio in 2018](#). The poll found that approximately 9% of non-elderly adults (ages 18-64) in the state were uninsured in 2018, a rate which has remained unchanged since 2014. Among the remaining non-elderly Ohioans, 50% received coverage through their own or a spouse's employer, 24% reported public coverage, and 17% reported another source of coverage, including individual plans. [Learn more about the 2018 OHIP and access the data.](#)

## Payment & Delivery System Advancement in the States

### Technical Brief: Data Support Considerations in Medicaid ACO Programs



In a [recent brief](#) on Medicaid accountable care organizations (ACOs), the Center for Health Care Strategies (CHCS) outlines three main types of data that Medicaid ACOs need from states to successfully improve health outcomes and manage attributed patients' total cost of care: patient attribution data, cost and quality data, and care management information. The brief also examines lessons and challenges related to sharing data for Medicaid ACO programs based on how several states provide data to organizations participating in ACOs.

### The ABCs of APCDs: How States Are Using Claims Data to Understand and Improve Care

An [issue brief](#) published by the California Health Care Foundation (CHCF) considers the ways all-payer claims databases (APCDs) are being used by select states with currently functioning APCDs (Colorado, Massachusetts, Minnesota, Rhode Island, Utah, and Virginia) in order to inform the development of California's own APCD. Issues of critical importance to California include: tracking spending trends and cost drivers, understanding prescription drug spending and use, uncovering key drivers of the opioid epidemic, and estimating the prevalence and cost of chronic disease.

## Federal Data: News & SHADAC Resources

### NHIS Early Release: Uninsurance Estimates for First Half of 2018 Show No Change from 2017



New coverage estimates from the National Health Interview Survey (NHIS) indicate that 12.5% of non-elderly adults (age 18-64) nationwide were uninsured during the first half of 2018, which was unchanged from the same time period in 2017. Non-elderly adults with incomes below 100% FPL showed an increase in public coverage from 51.4% in 2017 to 55.8% in 2018, and a decrease in private coverage from 25.8% to 20.0%. [Read our blog post for more details.](#)

### 2017 American Community Survey Public Use Microdata Files Now Available

The U.S. Census Bureau has released the [Public Use Microdata Sample](#) (PUMS) files for the 2017 American Community Survey (ACS). PUMS files show the full range of population and housing unit responses collected on individual ACS questionnaires for a sub-sample of ACS housing units and group quarters (amounting to approximately 1% of the United States population) and allow users to conduct custom analyses. The files can be accessed via [American FactFinder](#).



### SHADAC State Sample Size Files for ACS & CPS Updated with 2017 Counts

SHADAC has updated American Community Survey (ACS) and Current Population Survey (CPS) state sample size files to include 2017. The [ACS Sample Size file](#) includes sample counts by state from 2008–2017 and provides individual counts from the Public Use Microdata Sample (PUMS), household counts from the PUMS, individual counts from the full file, and household counts from the full file. The [CPS Sample Size file](#) includes sample size counts by state from 1988–2017 and provides both individual and household counts.

### 2017 National Survey of Children's Health Now Available



The Maternal and Child Health Bureau (MCHB) of the Health Resources and Services Administration (HRSA) released [2017 estimates](#) from the National Survey of Children's Health (NSCH). The 2017 survey includes data from nearly 21,000 U.S. households and provides annual national- and state-level estimates of key measures of health and well-being for children 0–17 years of age. HRSA notes that the 2016 and 2017 NSCH data can be combined to provide a sample of over 70,000 children. [Learn more about the NSCH](#), including topics addressed by the survey and examples of NSCH data.

Related Resource: [Access a series of SHADAC infographics](#) that use the 2016 NSCH to highlight kids' health in the United States across social determinants of health.

## Additional Announcements

### Health Care Coverage and Access in Your State



The Commonwealth Fund recently released a new [resource](#) providing an informational overview of health care access and coverage in all 50 states from 2011 to 2017. [Fact sheets](#) for each state include data on changes over time in: the percentage of uninsured adults and adults going without care because of costs, enrollment in marketplace plans and Medicaid, and the amount of federal support for health coverage.

For additional additional state-level information on health insurance coverage, including breakdowns by age, race/ethnicity, and income, visit SHADAC's [State Health Compare](#).

### Forthcoming: Findings from the 2018 Massachusetts Health Reform Survey

The Blue Cross Blue Shield of Massachusetts Foundation will be hosting an event to announce results from the [2018 Massachusetts Health Reform Survey](#) in Boston on Tuesday, December 11th. The 2018 MHRF includes new data on access to care for mental health and substance use disorders, as well as updated information on core measures of health care access and affordability. MHRF has been conducted periodically since 2006 to track changes in the health care system in Massachusetts. [Learn more and register for the event](#).

## Recommended Reading

[New Data on Drug Overdose Deaths Highlight the Need for State-Level Analysis](#)

*SHADAC Blog*, November 2018

[Latino Children in California Face Inequitable Access to Care \(Infographic\)](#)

*SHADAC Blog*, November 2018

[Access in Brief: Rural and Urban Health Care](#)

*MACPAC Issue Brief*, October 2018

[Blue Cross MN Foundation working with University of Minnesota to reach state's uninsured population](#)

*Blue Cross MN Foundation Blog*, October 2018

[Obesity Rate Increased Nationally for Second Year in a Row: New Data on State Health Compare](#)

*SHADAC Blog*, October 2018

[Forward to a friend.](#)

[unsubscribe from this list](#) | [update subscription preferences](#)

*Copyright © 2018 University of Minnesota*  
SHADAC, 2221 University Avenue SE, Suite 345, Minneapolis, MN 55414